

# Fly case

NIGHT UNITS

Flycase literally means "air box". This products line of Roberto Cavalli Home Interiors is inspired by the protective containers used for the transport of fragile equipment. The size games and countless finishes create different combinations of sideboards, chest of drawers, cabinets and bedside tables.



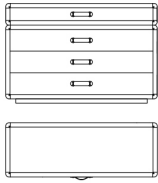
# Fly case

## NIGHT UNITS

Drawer unit with structure in multilayer wood, covered in leather from the collection or veneered in essence from the collection.

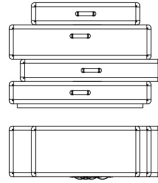
Metal details in the finishings from the collection.

Optional hexagonal or lozenge quilted leather.



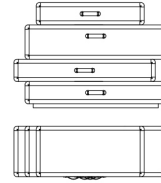
C.FLY.331.A

Drawer unit



C.FLY.331.C

Drawer unit - left



C.FLY.331.B

Drawer unit - right

### Standard features

L 140 D 50 H 92 cm  
L 55.12 D 19.69 H 36.22 in

### Standard features

L 151 D 50 H 104 cm  
L 59.45 D 19.69 H 40.94 in

### Standard features

L 151 D 50 H 104 cm  
L 59.45 D 19.69 H 40.94 in

# Fly case

---

NIGHT UNITS

---

UPHOLSTERY

Leather cat. A

Leather cat. B

Leather cat. C Cavallino

See the detailed files in the "Technical information" section

# Fly case

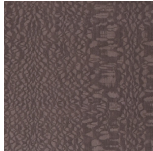
NIGHT UNITS

## STRUCTURE

### Wood



Oak  
Veneered  
Dyed Wengé



Rose  
Carbalho  
Veneered



Grey  
Carbalho  
Veneered



Eucalyptus  
Frisé  
Veneered

### Metal



Black  
Chrome



Chrome



Gold



Brushed  
Gold



Brushed  
Bronze

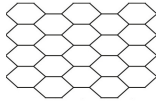


Brushed  
Dark Bronze

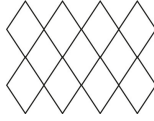
# Fly case

NIGHT UNITS

## OPTIONALS UPHOLSTERY



Hexagonal  
quilted  
leather



Lozenge  
quilted  
leather